

Investor Information

Nissha Printing Co., Ltd. as of March 31, 2011

Corporate Data

Founded

October 6, 1929

Established

December 28, 1946

Capitalization

¥5,684,790 thousand

Number of Employees

1,059 (Consolidated: 4,121)

Fiscal Year-End

March 31

Corporate Website

Corporate Information

<http://www.nissha.co.jp/english/>

IR Information

<http://www.nissha.co.jp/english/ir/>

Contact Information for Investors

3 Mibu Hanai-cho, Nakagyo-ku, Kyoto 604-8551, Japan

T +81 75 823 5144 F +81 75 823 5344

Shareholder Services

Transfer Agent in Japan

Mizuho Trust & Banking Co., Ltd.

Head Office Transfer Department

2-8-4 Izumi, Suginami-ku, Tokyo, Japan

T 0120 288 324 (toll free only in Japan)

Stock Information

Securities Code

7915 (Japan)

Number of Shares Authorized

180,000,000 shares

Number of Shares Issued

45,029,493 shares

Number of Shareholders

13,839

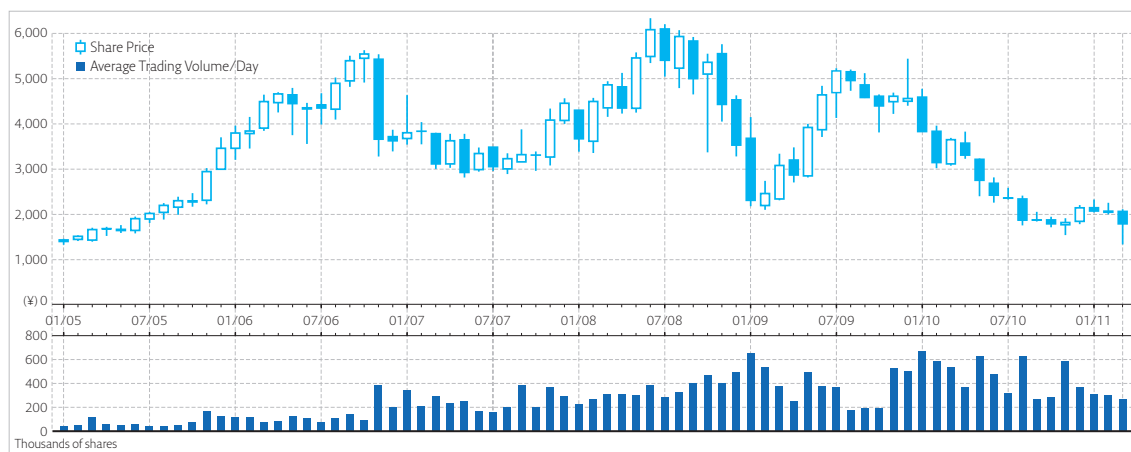
Number of Shares per Trading Unit

100 shares

Stock Listings

Tokyo, Osaka

Monthly Share Price Range and Trading Volume

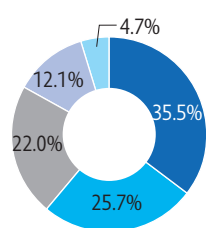


Major Shareholders (Top 10)

Shareholders	Number of Shares Held (thousands)	Percentage of Shareholding (%)
Taiyo Fund, L.P.	2,887	6.41
Suzuki Kosan Co., Ltd.	2,563	5.69
Meiji Yasuda Life Insurance Company	2,341	5.20
Mizuho Bank, Ltd.	2,076	4.61
Japan Trustee Services Bank, Ltd. (Trust Account)	1,952	4.33
The Bank of Kyoto, Ltd.	1,442	3.20
Japan Trustee Services Bank, Ltd. (Trust Account 9)	953	2.11
DIC Corporation	905	2.01
Oji Paper Co., Ltd.	894	1.98
Nissha Kyoekai	872	1.93

Our Company has 2,113 thousand shares of treasury stock (share of stocks per all issued stocks: 4.69%), and is excluded from the above list.

Breakdown of Shareholders by Type (Ratio of Shares Owned)



- Japanese Financial Institutions and Securities Firms 35.5%
- Other Japanese Corporations 25.7%
- Japanese Individuals and Others 22.0%
- Foreign Institutions and Individuals 12.1%
- Treasury Stock 4.7%